

**Functional Skills – Mathematics  
Entry 2  
Assessment Paper**

**Guide time 1hr – 1hr 30 mins**



Barcode

**You need**

- A pen (black or blue ink)
- A calculator
- Mathematics resource sheets (entry level 2)
- A selection of money including £10, £5, £2, £1, 50p and at least two 20p, 10p, 5p and copper coins (provided by the assessor).

**Candidate instructions**

- Do not open this paper until you are told to do so
- Answer all questions
- Write your answers in the spaces provided in this assessment paper (assessors can write your answers for part A only if required)
- Show all your workings
- Show how you have checked your workings. Marks are available for this
- If you need more space to complete your answer to any question, use additional sheets of paper and attach them to this assessment paper

**Candidate information**

There are two parts to this paper; part A and part B

**Candidate guidance**

- Your assessor will read the questions in part A to you and help you with any words you do not understand
- Your assessor may read the questions in part B to you and help you with any words you do not understand
- For some questions, you will need to use money or pictures. These will be given to you by the assessor

<b>THE FOLLOWING DETAILS MUST BE COMPLETED</b>
Centre Name
Surname/Family Name
First Name
Unique Learner Number (ULN) if known
Date of Birth
Date of Assessment
Candidate Signature

Marker  
use only

**Part A mark**  
**Part B mark**  
**Total marks**  
**Pass mark**  
**Pass/did not  
achieve**


**Part A**

Do not write  
in this margin.  
For Marker  
use only

**1** \_\_\_\_\_  
\_\_\_\_\_  
\_\_\_\_\_  
(2 Marks)

**2** \_\_\_\_\_  
\_\_\_\_\_  
\_\_\_\_\_  
(2 Marks)

**3** \_\_\_\_\_  
\_\_\_\_\_  
\_\_\_\_\_  
(2 Marks)

**4** \_\_\_\_\_  
\_\_\_\_\_  
\_\_\_\_\_  
\_\_\_\_\_  
\_\_\_\_\_  
\_\_\_\_\_  
(5 Marks)

**5** \_\_\_\_\_  
\_\_\_\_\_  
\_\_\_\_\_  
(1 Mark)

6 \_\_\_\_\_  
\_\_\_\_\_  
\_\_\_\_\_  
(2 Marks)

7 \_\_\_\_\_  
\_\_\_\_\_  
\_\_\_\_\_  
(1 Mark)

8 \_\_\_\_\_  
\_\_\_\_\_  
\_\_\_\_\_  
(1 Mark)

9 \_\_\_\_\_  
\_\_\_\_\_  
\_\_\_\_\_  
(2 Marks)

10 \_\_\_\_\_  
\_\_\_\_\_  
\_\_\_\_\_  
(2 Marks)

11 \_\_\_\_\_  
\_\_\_\_\_  
\_\_\_\_\_  
(2 Marks)

## Part B

Do not write  
in this margin.  
For Marker  
use only

### Planning a day out



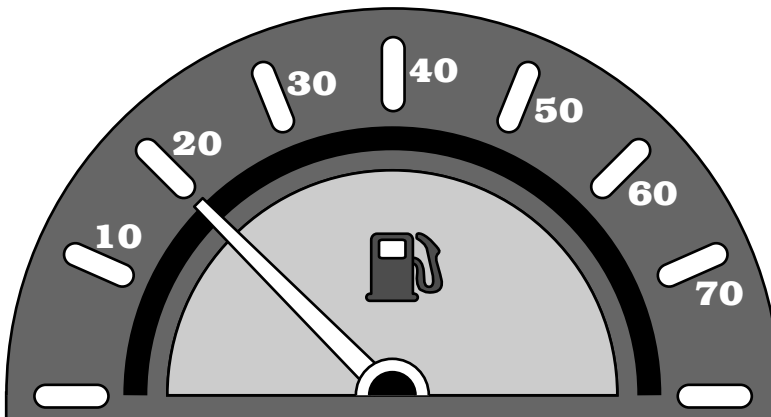
The Smith family are making plans for their day out. They need to make sure there is enough petrol in the car. They also need to make sure they have enough money to pay for the park entry, lunch and snacks.

- 1 It is 30 miles from their home to the park. How many miles will they travel altogether?

---

(2 Marks)

- 2 This is the petrol gauge for the car.



- (a) How many litres of petrol are in the tank?

---

(1 mark)

(b) The car needs 5 litres to travel 40 miles. Do they have enough to get to the park and back? Explain how you know this.

---

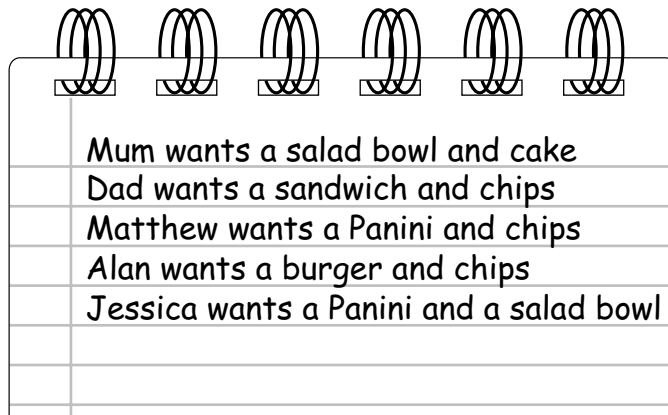
---

---

---

(3 Marks)

3 The family are planning their lunch. Use the price list on the resource sheets to work out the total money they should allow:



Mum wants a salad bowl and cake
Dad wants a sandwich and chips
Matthew wants a Panini and chips
Alan wants a burger and chips
Jessica wants a Panini and a salad bowl

---

---

---

---

---

---

(3 Marks)

- 4 They allow another £2 each for snacks during the day. How much money should they allow for food altogether?

---

---

---

---

---

---

---

(4 Marks)

- 5 Use the weather forecast to decide which day they should go to the park. Use the temperature and weather information to explain why you have chosen this day.

---

---

---

---

(2 marks)

**END OF ASSESSMENT**

**BLANK PAGE**

**BLANK PAGE**